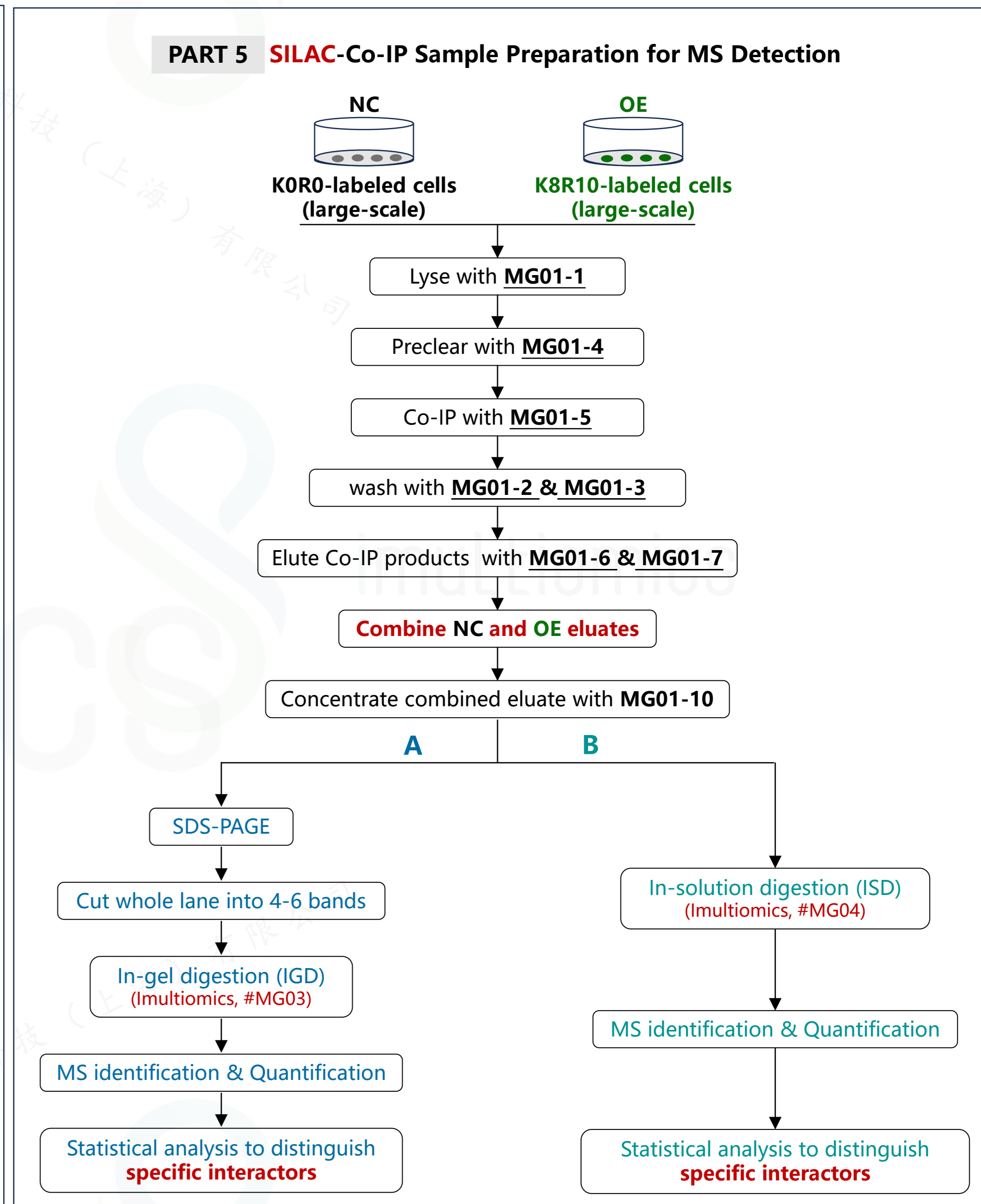
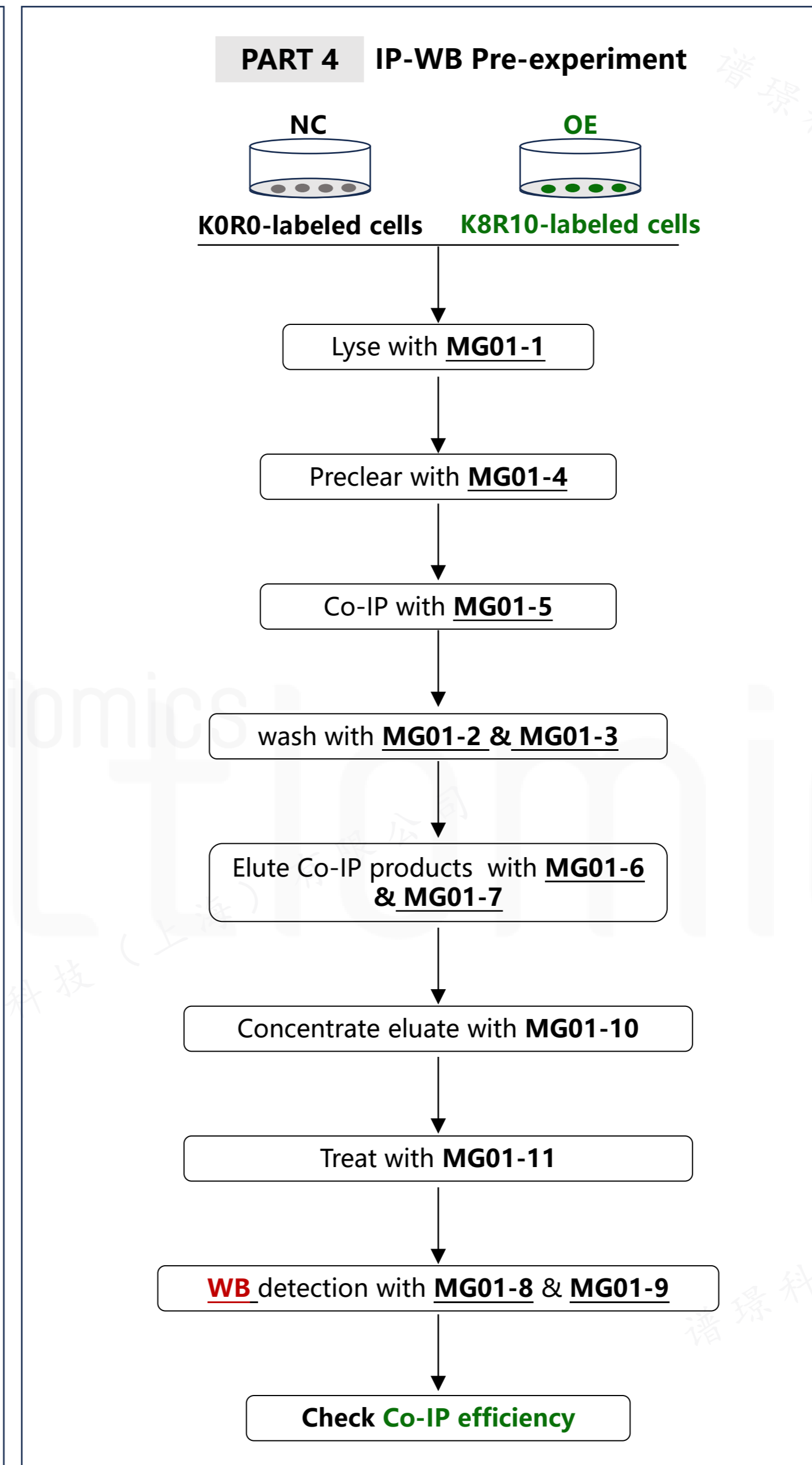
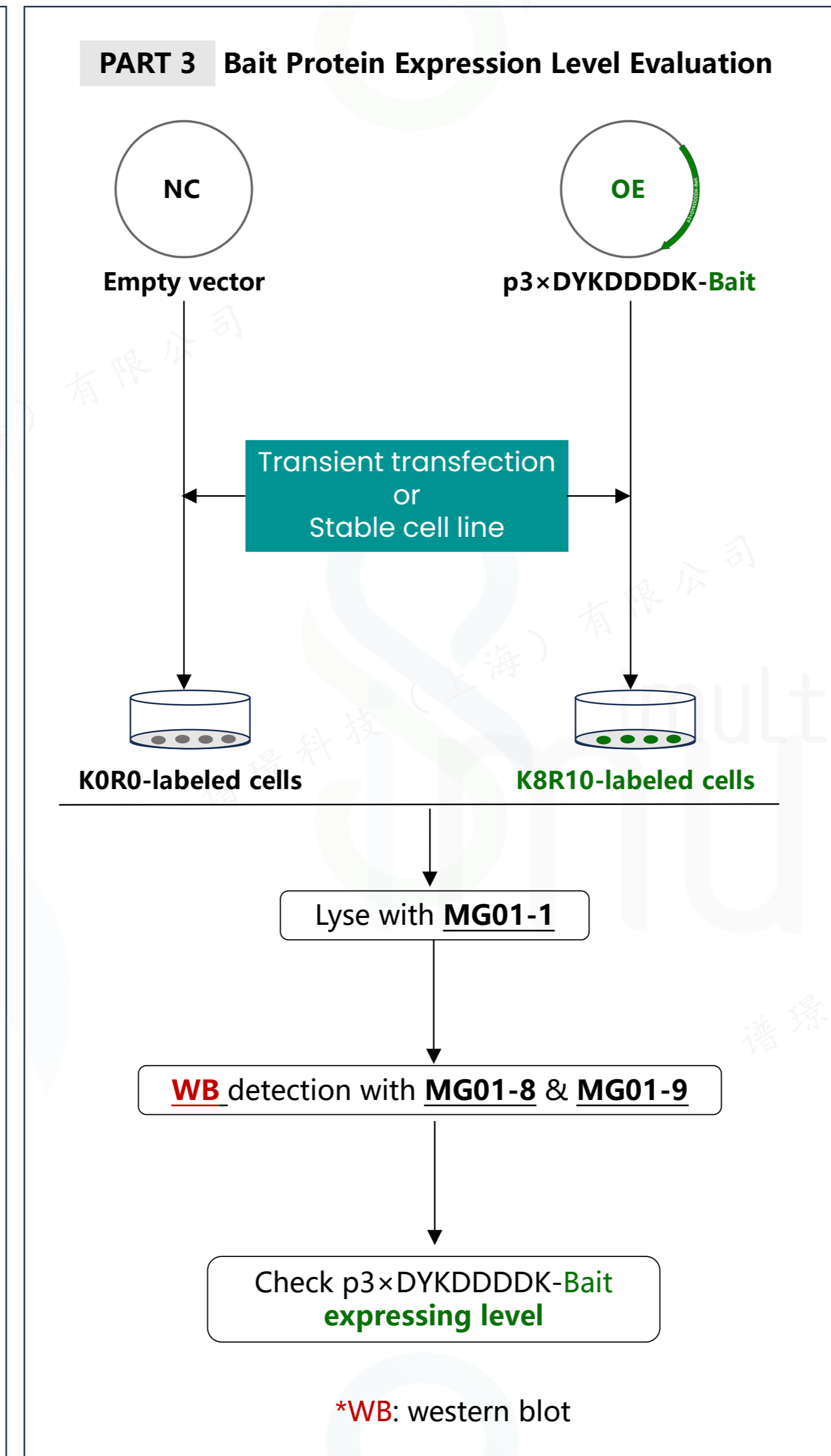
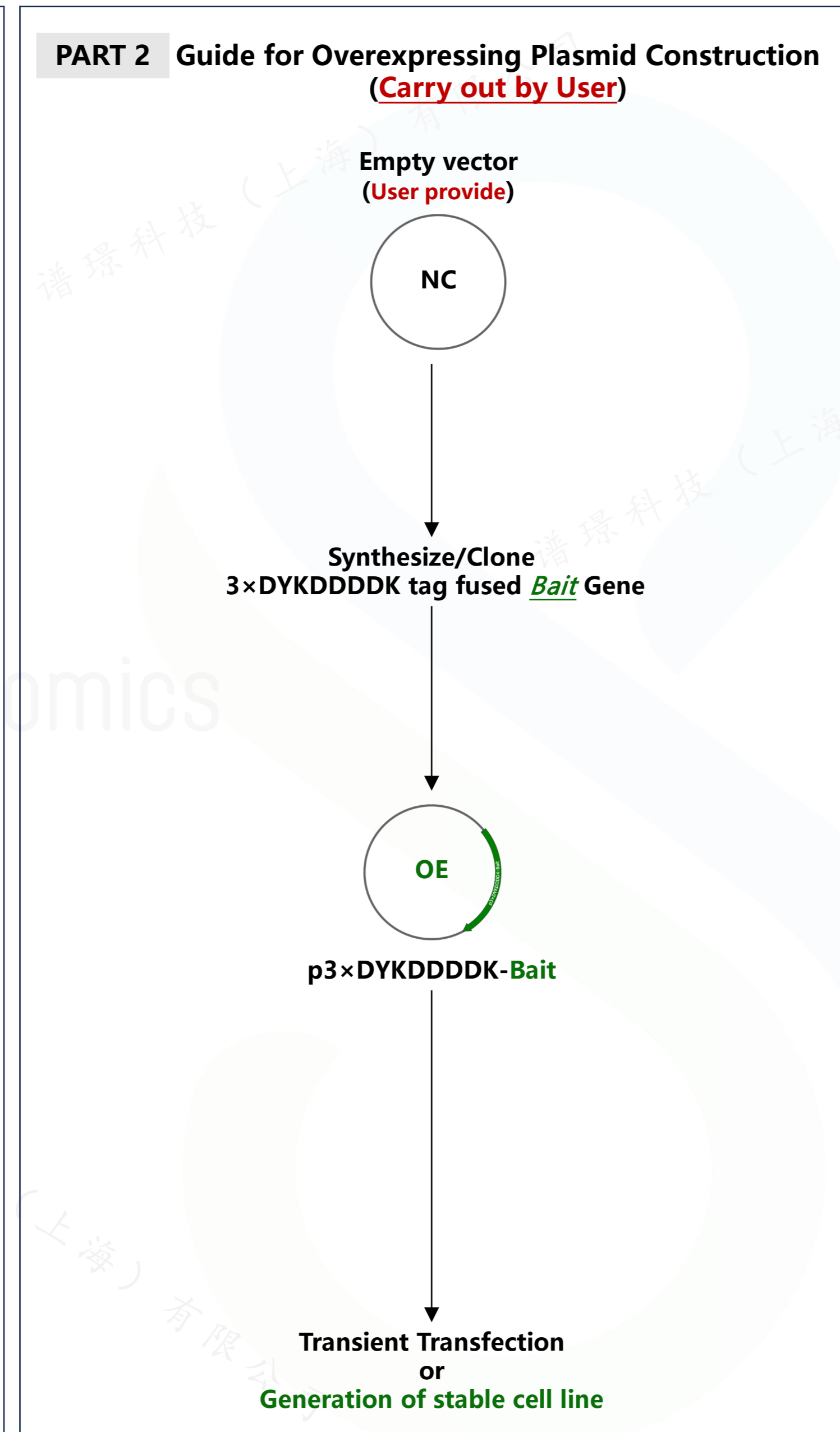
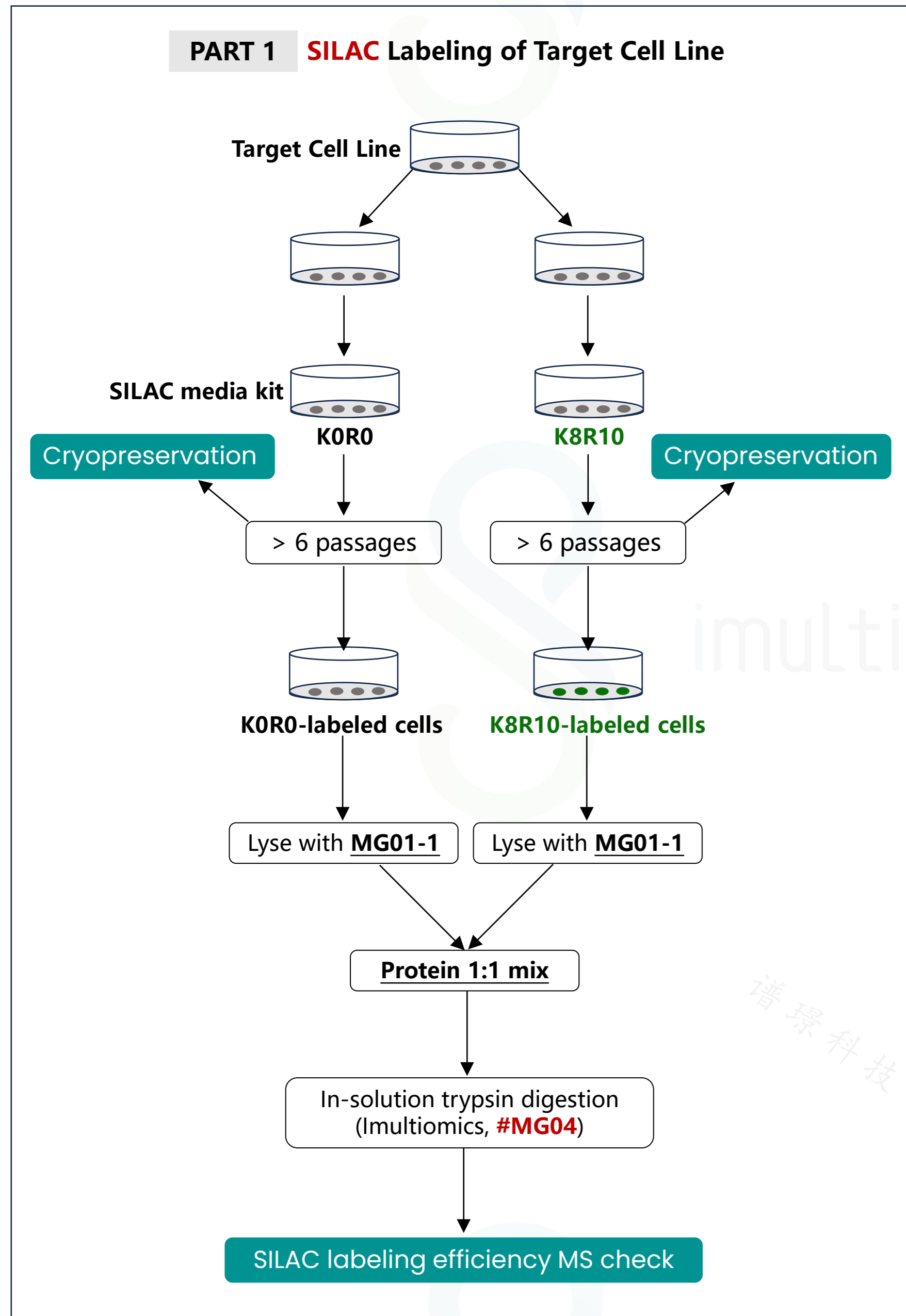


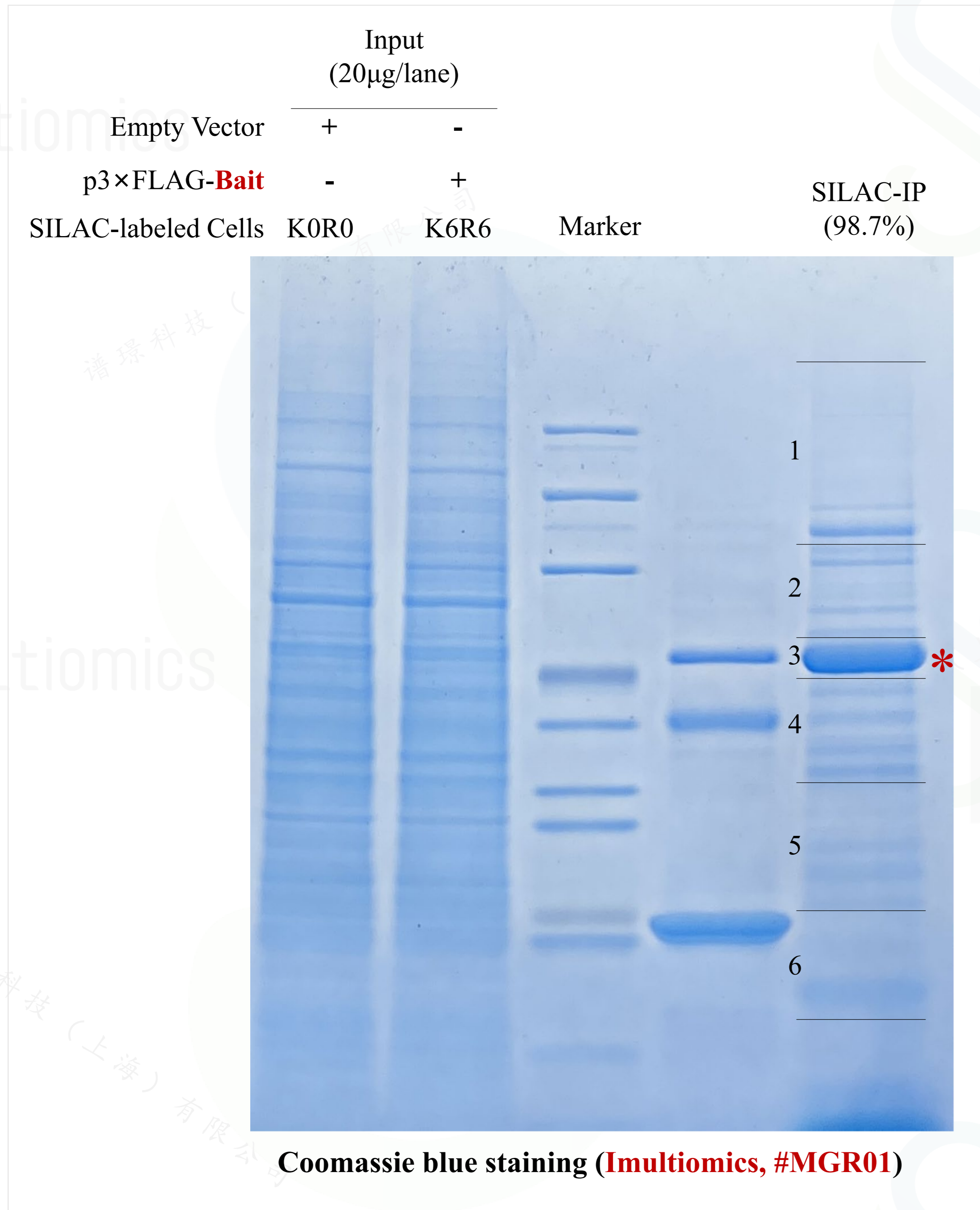
蛋白质互作/后修饰质谱筛选 (SILAC)

SILAC-IP-MS Enrichment Kit (3 × DYKDDDDK tag, MS grade)

Catalog Number: MG02

Workflow of SILAC-IP-MS Enrichment Kit (3×DYKDDDDK tag, MS grade)
Catalog Number: #MG02





SILAC-IP sample preparation using MG02 Kit. NC and OE cells were labeled with SILAC-DMEM (K6R6) Kit (Imultiomics, #SM202101). SILAC-IP sample was prepared according to the protocol of MG02 Kit and detected using Coomassie blue staining (Left) or western blot (Right). Red star: Enriched Bait Protein.
 More information: https://www.imultiomics.com/system_research_scheme/molecular_target_screening/ip_mssilac_ip_ms