

Co-IP/Pull-down In-solution Trypsin Digestion (ISD) Kit
Catalog Number: MG04

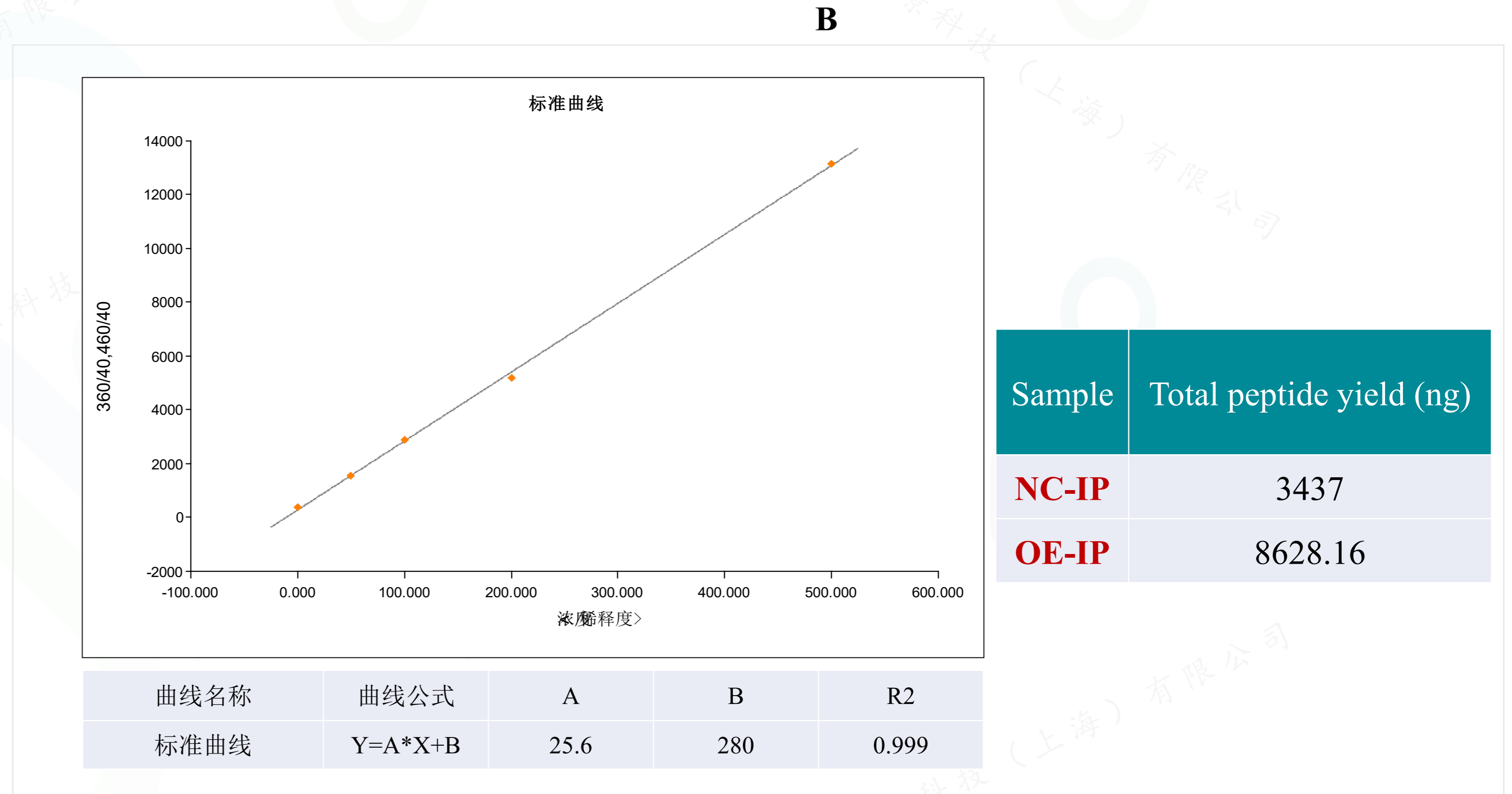
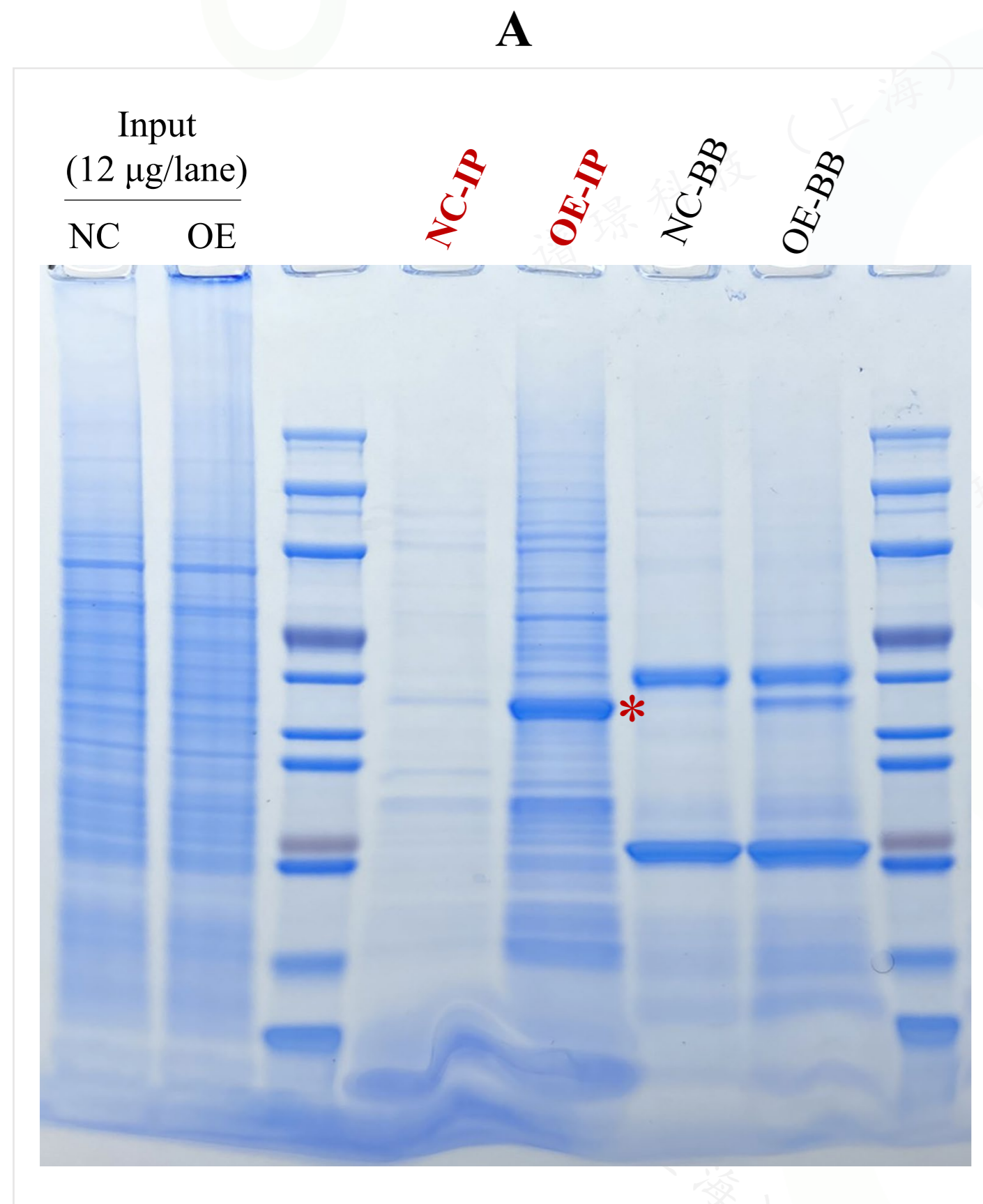
MG04 compatible with all our MG Kits

货号	名称	应用领域	质谱定量方式
MG01	IP-MS富集试剂盒 (3×FLAG tag)	蛋白质互作/后修饰筛选	LFQ [1]
MG02	SILAC -IP-MS富集试剂盒 (3×FLAG tag)	蛋白质互作/后修饰筛选	SILAC [2]
MG05	SM-PD富集试剂盒 (Biotin tag)	小分子-靶点蛋白筛选	LFQ [1]
MG08	SILAC -SM-PD富集试剂盒 (Biotin tag)	小分子-靶点蛋白筛选	SILAC [2]
MG06	SM-PD富集试剂盒 (Alkyne tag)	小分子-靶点蛋白筛选	LFQ [1]
MG09	SILAC -SM-PD富集试剂盒 (Alkyne tag)	小分子-靶点蛋白筛选	SILAC [2]
MG07	SM-PD富集试剂盒 (Azide tag)	小分子-靶点蛋白筛选	LFQ [1]
MG10	SILAC -SM-PD富集试剂盒 (Azide tag)	小分子-靶点蛋白筛选	SILAC [2]

[1] *Mol Cell Proteomics* 2014, **13**(9):2513-2526.

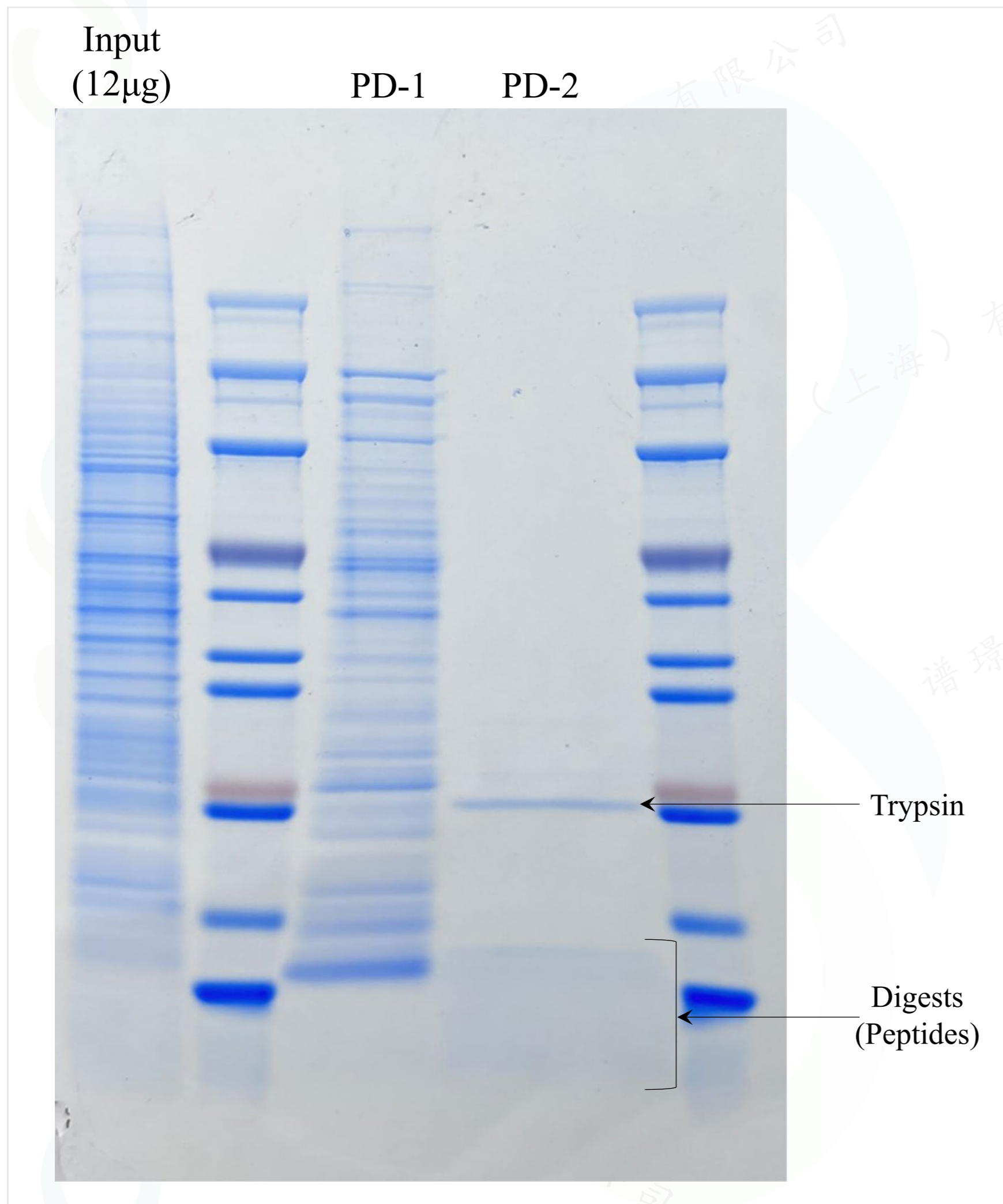
[2] *Mol Cell Proteomics* 2002, **1**(5):376-386.

MG04 Kit: In-solution digestion of Co-IP samples prepared by MG01 Kit



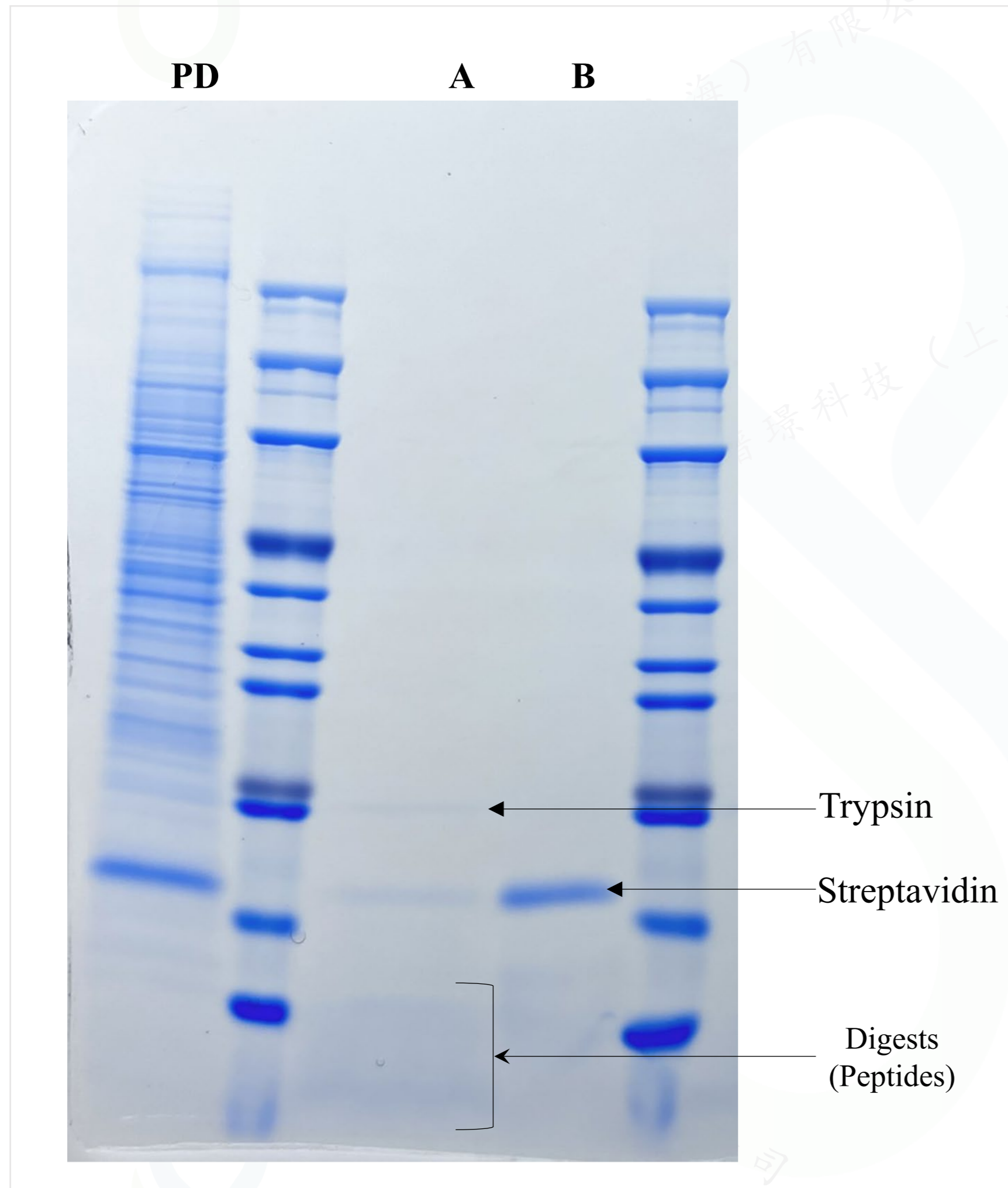
1. Co-IP samples of **NC-IP** and **OE-IP** were prepared according to the protocol of **MG01 Kit**.
2. **(A)** 70% of **NC-IP** and **OE-IP** samples was separated by SDS-PAGE gel and stained using Coomassie blue staining reagent (**Imultiomics, #MGR01**). Red star: Enriched 3×DYKDDDDK tag fused **Bait Protein**.
3. **(B)** 30% of **NC-IP** and **OE-IP** samples was conducted to in-solution digestion according to the protocol of **MG04 Kit**, and total peptide yields (ng) were measured.

MG04 Kit: On-beads digestion of Pull-down (PD) samples of magnetic beads



1. Protein pull-down (PD) was conducted using magnetic beads in duplicate (PD-1 and PD-2).
2. PD-2 was conducted to on-beads digestion using **MG04 Kit**. In contrast to PD-1, the pulled-down proteins were completely digested into peptides.
3. Gel was stained using Coomassie blue staining reagent (**Imultiomics, #MGR01**).

MG04 Kit: On-beads digestion of Pull-down (PD) samples of agarose beads



PD: MG05-5 (Streptavidin-beads in MG05 Kit) enriched proteins by pull-down (PD). PD was conducted in duplicate.

A. PD sample was carried out on-beads digestion using **MG04 Kit**. the pulled-down proteins were completely digested into peptides in contrast to that of PD.

B. The left beads after on-beads digestion was treated with MG05-6 (5× sample loading buffer in MG05 Kit) for Coomassie blue staining reagent (**Imultiomics, #MGR01**). The data showed that most of streptavidin remained on beads after on-beads digestion, great for downstream LC-MS identification of pulled-down proteins.